

## MAINTENANCE

Preventative maintenance is an important element of managing any fleet of vehicles, marine vessels and other movable equipment. Maintenance management can be challenging in terms of obtaining the right kind of service at the right time, and fortunately WebTrack can help you to meet these challenges.



**WebTrack** highlights when an asset is due for service by means of automated and color-coded preventive maintenance alerts which can be programmed, automatically displayed and emailed to the responsible person. Equipment overdue for service will be marked in red while equipment due for service is marked in orange. This provides an excellent visual of the state of your fleet's maintenance plan at any given time.

**WebTrack** provides a wide range of pre-defined maintenance planning services which assist in tracking maintenance schedules by date or mileage. However, customising your equipment list or creating your own maintenance schedules based on your requirements is quick and easy. By constantly monitoring past and current usage of the asset, WebTrack is able to predict the next scheduled maintenance event accurately, further enhancing your maintenance planning.

• **WebTrack**



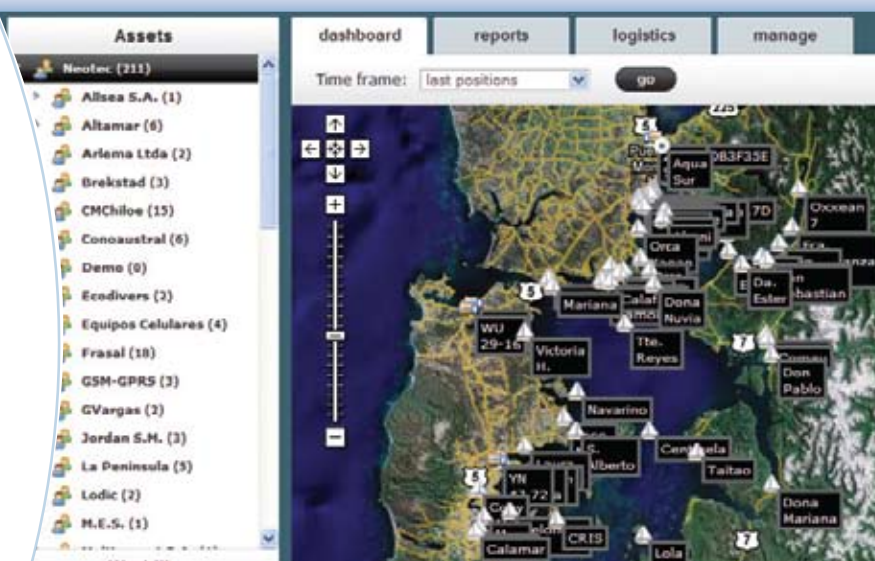
[www.globaltrack.com](http://www.globaltrack.com)  
[info@globaltrack.com](mailto:info@globaltrack.com)

© 2009 Global Supply Chain Services Pty, Ltd



**WEBTRACK ALLOWS YOU TO MANAGE YOUR ASSETS WITH DETAILED PRECISION, ENSURING EFFECTIVE AND EFFICIENT MANAGEMENT OF YOUR ASSETS NO MATTER WHERE THEY ARE IN THE WORLD.**

Tracking your assets is now as simple as clicking your mouse and viewing them online. WebTrack offers online maps that display the exact location of your assets at any time through up-to-date roadmaps and real-time satellite imagery. It has the ability to zoom in to street level thus enhancing the level of detail and precision.



Not only does Webtrack address key safety and security concerns, but supports and enhances operational management tasks, and thus the smooth running of your business. Asset movement history and other asset-related data is available on screen at any time and WebTrack also ensures clear and concise reporting to support operational analysis and informed decision making.

The integrated communication facility ensures that you are kept up to date with notifications and alerts such as panic or speeding alerts. In addition you can manage your own communication terminals via SMS or e-mail and can set or edit your e-mail and dashboard notifications on events raised by the units.

In order to use WebTrack all you require is a web browser and an internet connection, and a password protected log-in ensures that all access to the system is secure. Security settings within the system allow for varying authorisation levels for multiple users, and all in the language of your choice. There are no software installation requirements and all updates are automatic, ensuring peace of mind that you are always working on the latest software version while knowing that your data is securely stored and backed up.

## REPORTS

WebTrack collates a wealth of data into user-friendly and easy to understand reports and graphs, which can be configured individually or into groups of assets according to specific needs.

Reports can be scheduled to run at predefined times and sent to an unlimited list of e-mail addresses. Reports can also be requested online in real-time and downloaded at your own convenience.

Detailed reports can be sorted and displayed according to various selected criteria or as a graph highlighting areas of importance.

Data can be exported in XML, CSV, TSV and PDF format, which can be used to feed existing fleet management systems, or for further analysis in Microsoft Excel for example.

### A small extract from our extensive list of reports include:

#### TRIP REPORT

The trip report provides a detailed report of every trip made, including start- and end-times and locations and the driving distance in between. This information provides a management report on the usage of the vehicle, the amount of trips made and the overall usage.

#### STOPS REPORT

Stop Reports detail when, where and for how long assets are stationary. This may indicate driver rest breaks and may reflect possible holdups en route or inconsistencies in travel time.

#### UTILIZATION REPORT

The total time an asset has been in use, from departure to arrival can be determined using the utilization report. The graph immediately lets you see which assets are under or over utilized in the field, utilized in the field.

#### OVERSPEED REPORT

The speed reports indicate which assets have exceeded the predetermined speed limit. These reports assist in ensuring that drivers remain responsible and improve overall safety.

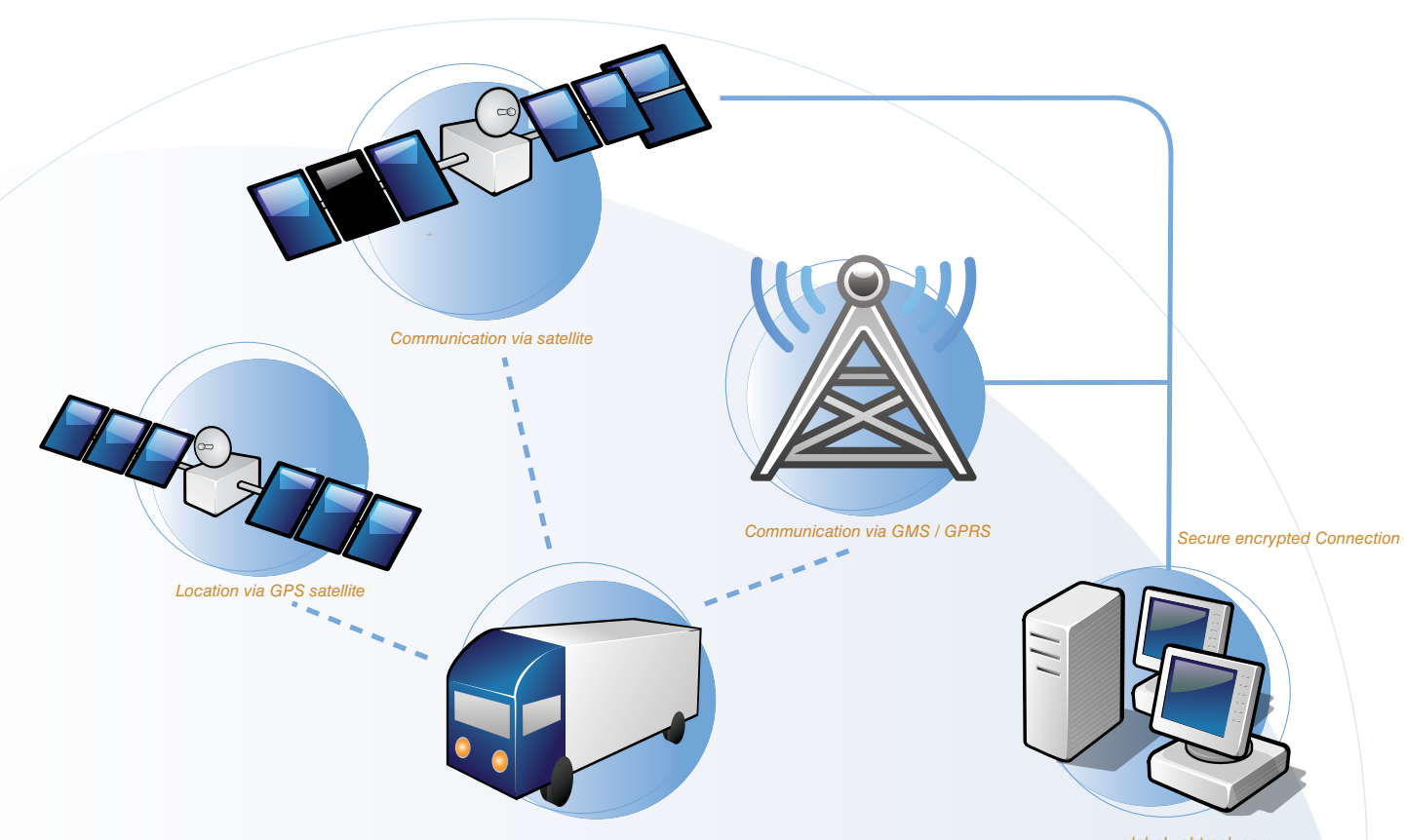
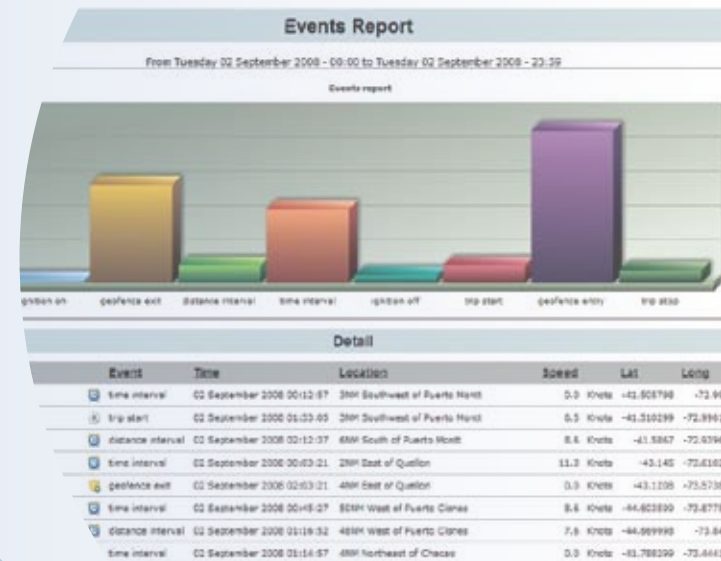
#### EVENTS REPORT

A chronological log of all events sent, presented with their time and location, such as the opening or closing of doors. The events reports immediately lets you see what happened where at what time, for example confirming delivery times up to the second.

#### HISTORY REPORT

The history report shows the time and location of one or each of your assets for a given time period, tracking the whereabouts of your fleet in great detail. Not only location information is provided but also usage details such as the closest city and the actual speed of the asset at the time.

*WebTrack provides many more detailed reports, too numerous to list. Why not contact us for a demo and experience the full potential of WebTrack!*



## HOW IT WORKS

EACH TRACKING DEVICE READS ITS OWN POSITION VIA GPS SATELLITES. DEPENDING ON THE COMMUNICATION TECHNOLOGY OF YOUR TRACKING DEVICE, THIS INFORMATION IS SENT EITHER TO ONE OF FOUR COMMUNICATION SATELLITES COVERING THE WHOLE WORLD, OR TO A CELLULAR NETWORK. THE INFORMATION IS THEN TRANSMITTED TO THE GLOBALTRACK SERVERS WHERE IT IS PROCESSED AND DISPLAYED ON THE DASHBOARD, AN ONLINE CONSOLE WHICH ALLOWS YOU TO VIEW THE UNITS ON YOUR SCREEN.

WEBTRACK PROVIDES ACCURATE, DETAILED INFORMATION TO IMPROVE EFFICIENCY OF YOUR MOTOR-, MARINE- AND AVIATION FLEET. IT ASSISTS IN REDUCING YOUR OPERATING EXPENSES WHILE INCREASING SECURITY AND RELIABILITY. ALL REAL-TIME INFORMATION CAN BE ACCESSED INSTANTLY AND IS PRESENTED VIA USER-FRIENDLY MAPS, REPORTS AND GRAPHS.

- The current location or history of any asset is displayed on both street maps and satellite images. Through easily identifiable icons, such as "trip start", "panic button pressed" or "door open", the status of the asset is immediately identifiable on the map.
- Detailed asset information such as speed, direction of the asset, distance driven and latest message received, etc is accessible by simply clicking on the asset icon on the screen.
- Setting geo-fences (pre-determined areas) is as easy as drawing them on the map, naming them and linking them automatically to the asset.
- Entering the points of interest link, you can pinpoint the exact location of your assets, including clients, borders etc.
- You are automatically notified via e-mail or SMS of any events such as speeding or the use of a panic button.
- Communicating directly with the driver with the use of Message Data Terminal, gives the driver up to date
- The optional Message Terminal allows direct communication with the driver.
- The asset overview page logs the entire asset list, which can be divided into groups and subgroups, enabling easy management of your entire fleet.
- The dashboard function provides easy map navigation, including the ability to zoom in and out, panning and switching between street and satellite views.

